

It's time to
RETHINK RISK MODELING AND SoD,
 unless inefficiency is your thing



How are you managing separation-of-duties (SoD) violations? If SoD polices are tied directly to roles, you've got a problem. The most efficient identity governance platform aligns risk to business activities.

We'll show you why business activities for SoD works best, because we're the ones pioneering it.

It starts with SoD

SoD helps prevent conflicts of interest, wrongful acts, fraud, abuse and errors. It's designed to ensure that individuals don't have conflicting responsibilities.

Most vendors model SoD through a role-based approach



What's a role?

A role is a collection of application permissions to perform a job, such as:

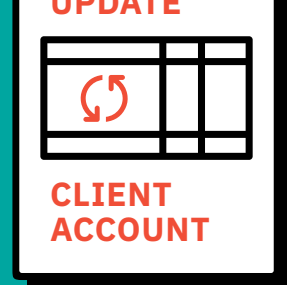
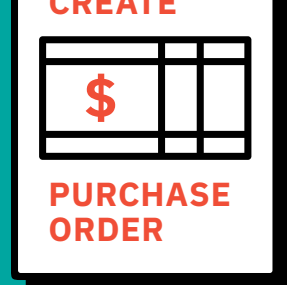


When used, this older, role-based approach only tells us that where the access comes from determines the risk. The problem with that is the impermanent nature of roles makes it extremely difficult to model risk policies and specifically SoD.

IBM takes a new, business activity-based approach to enterprise SoD

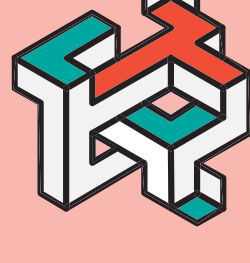
What's a business activity?

A business activity is a business process or task, such as:



Business activities remain more static than the contents within roles. They can be directly associated to specific business processes within industries, such as banking, retail or healthcare. They present an auditor-friendly view of SoD policies and violations within the enterprise by speaking the language of auditors and risk compliance managers.

Roles for SoD

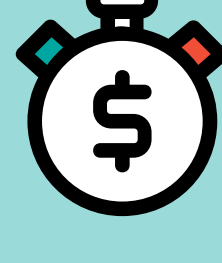


Unmanageable

The vast number of possible role combinations makes SoD impossible to review

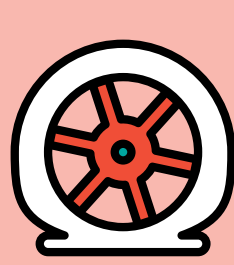
vs.

Business activities for SoD



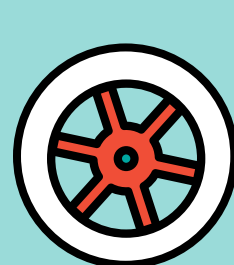
Fast

Organizations can start presenting risk almost immediately



Inefficient

Roles are constantly changing, requiring the SoD model to change



Efficient

If the role model changes, the SoD model is never affected



Confusing

The obscure language of roles is not auditor- or business-friendly

A.B.C.

Easy

Auditors understand the non-technical language of business activities

Move SoD from roles to business activities with IBM Security Identity Governance and Intelligence

Identity governance done right offers easy administration and valuable, audit-ready insights that show instantly that you've made the right kind of access decisions.

With business activity-based SoD, entitlements are translated into easily understandable risk identifiers that an auditor or a compliance officer can take action on.

Unique among major vendors, IBM employs two modeling paradigms: role modeling for delivering access, and business activities for risk and SoD management.

Take the first step toward efficiency today.

Register for your free 45-day trial of IBM Security Identity Governance & Intelligence



© Copyright IBM Corporation 2018. All Rights Reserved. IBM, the IBM logo, and ibm.com are trademarks or registered trademarks of International Business Machines Corporation in the United States.